

Hi! I'm

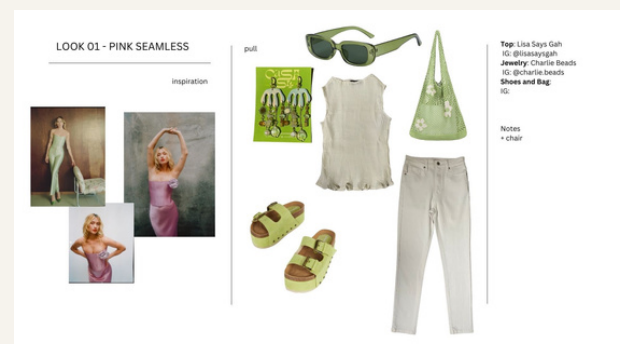
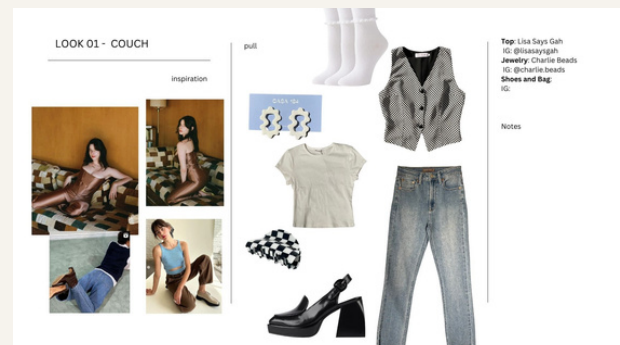
*Hannah
Hauge* 

Wardrobe Stylist - LA



Let's work together! 

Ex: Just USA Jeans



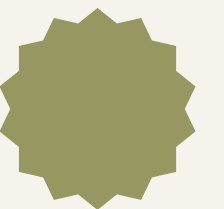
First and foremost, I am a wardrobe and prop stylist residing in the Los Angeles area. However, I occasionally produce creative campaigns for and with brands that align within my conceptual direction.

I'm adept at overseeing all stages of a project lifecycle, from pre to post production. When you work with me as a stylist, you can expect thorough communication, hands on assistance, and a full story board detailing each stylized look. This will then act as a guide for the day.

Authentic Collaborations 01

Styling Directive 02

Hands-on assistance 03





Just USA Jeans



Assets

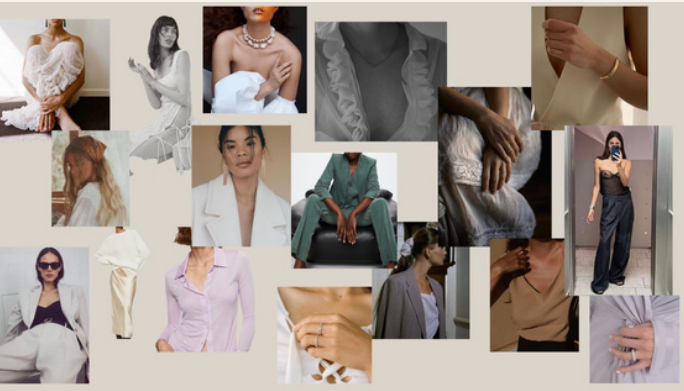


Just USA Jeans



Assets

Additional Work For *Hello Noémie*



LOOK 01

pull

Suit: WEND IG w.k.n.d
• Hands to be pinned
Shoes: LoQ IG @loq

Notes
Necklace: Smiling headshot
Rings: Shoot individually on separate hands silver - index or middle w/ face

LOOK 02

pull

Dress: Puka The Label IG @pukathelabel
Shoes: LoQ IG @loq

Notes
Rings: Stack
Earrings: Smiling face
Necklace: Lip close detail shot

back up pulls

LOOK 03

pull

Rings: Stacked on index finger
Earrings: Face + close up detail shots
Necklace: Face + close up detail shot

Notes
• = 1 black underwear, no bra?
• barefoot?

LOOK 04

pull

Top: WEND IG w.k.n.d
Pants: Vintage

Notes
Necklace: Smiling face
Ring: Index or middle

LOOK 05

pull

Shoes: LoQ IG @loq
Bag: Phosphene Studios IG @phosphene_studio

Notes
Earrings: Tight shot + face
Other accessories dependent on color of new product
Scarf in hair

LOOK 06

pull

Suit: Vintage
Shoes: LoQ IG @loq

Notes
Ring: Index or middle finger + face
Earrings: Smiling face

LOOK 07

pull

Blazer: Less is More Shop IG @lessismore.

Notes
Tie heels around pant legs? See ref below
Rings: Nothing on ring finger

LOOK 08

pull

Top: Shop Shani IG @shop_shani

Notes
Necklace: Mixed metals
Rings: Stack
Earrings: Only if rose gold if not use a different pair

LOOK 09

pull

Top: Shop Shani IG @shop_shani
Pants: IG Lessismore...





Hello Noémie

Styling



Additional Work For *Knature the Label*

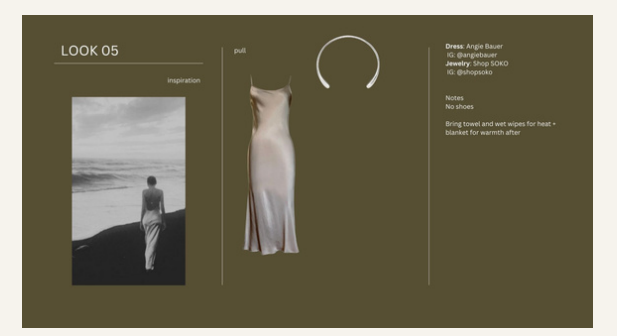
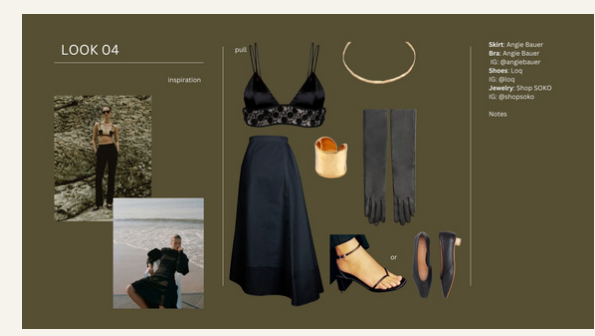
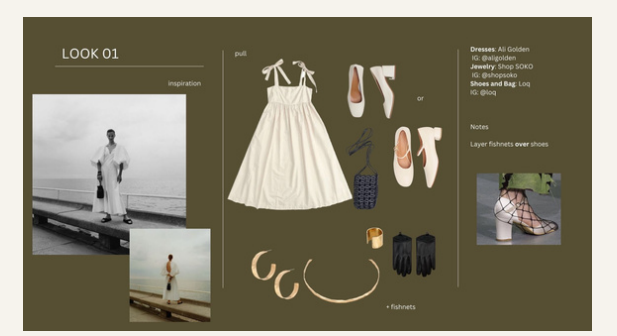
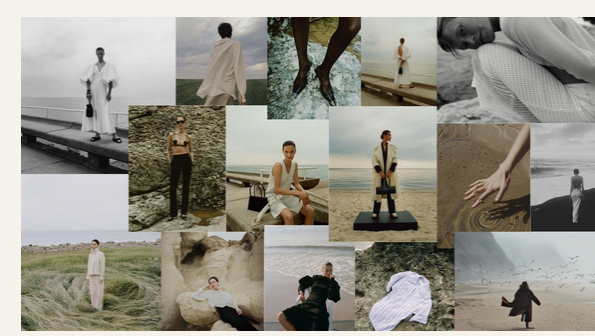
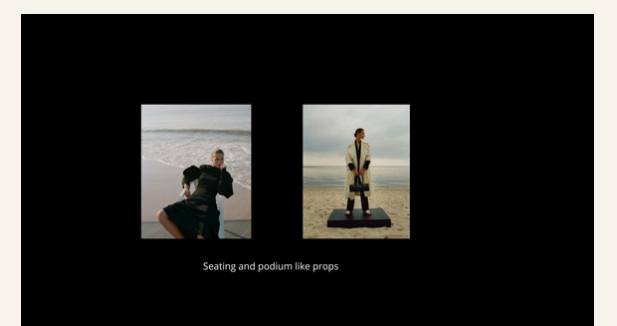
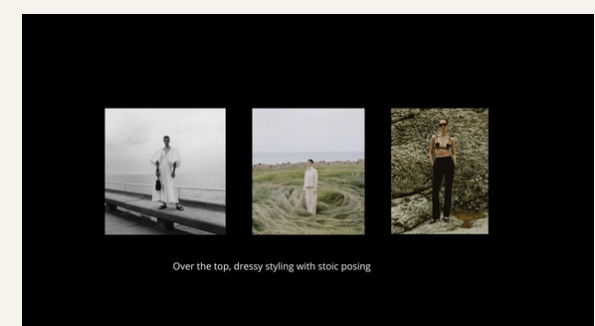
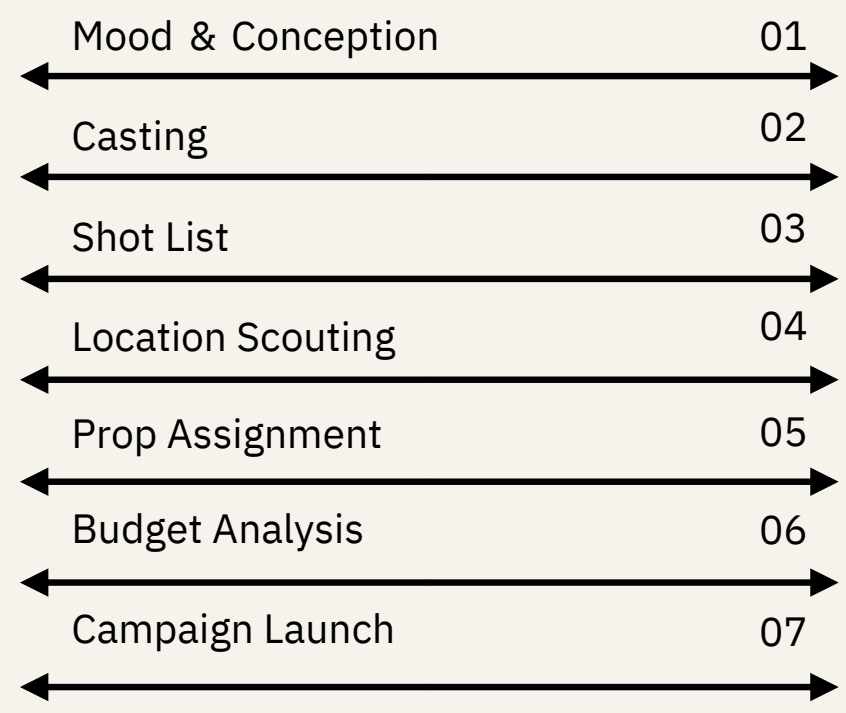


What we do

Creative Campaigns

CREATIVE PRODUCTION

The creative planning process breaking down styling, lifestyle, overall mood, and general shotlist.



Ex: Ali Golden, Angie Bauer, LoQ, SOKO, & Mod Ref



Creative Production



Photo



Creative Production



Photo



Contact Information



hannah.a.hauge@gmail.com

hannahhauge.com

949.945.8520

[@hannahhauge](https://www.instagram.com/hannahhauge)

